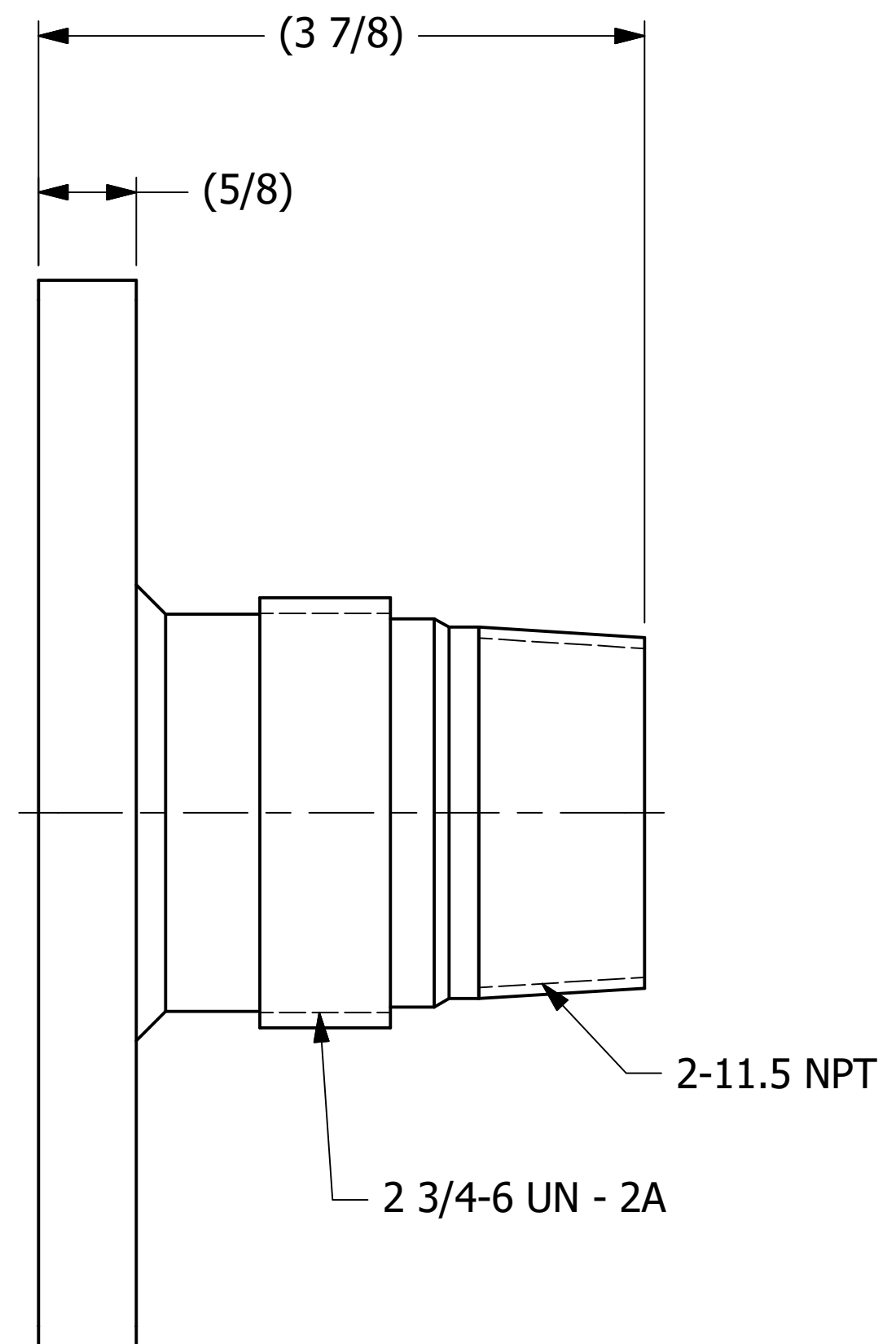
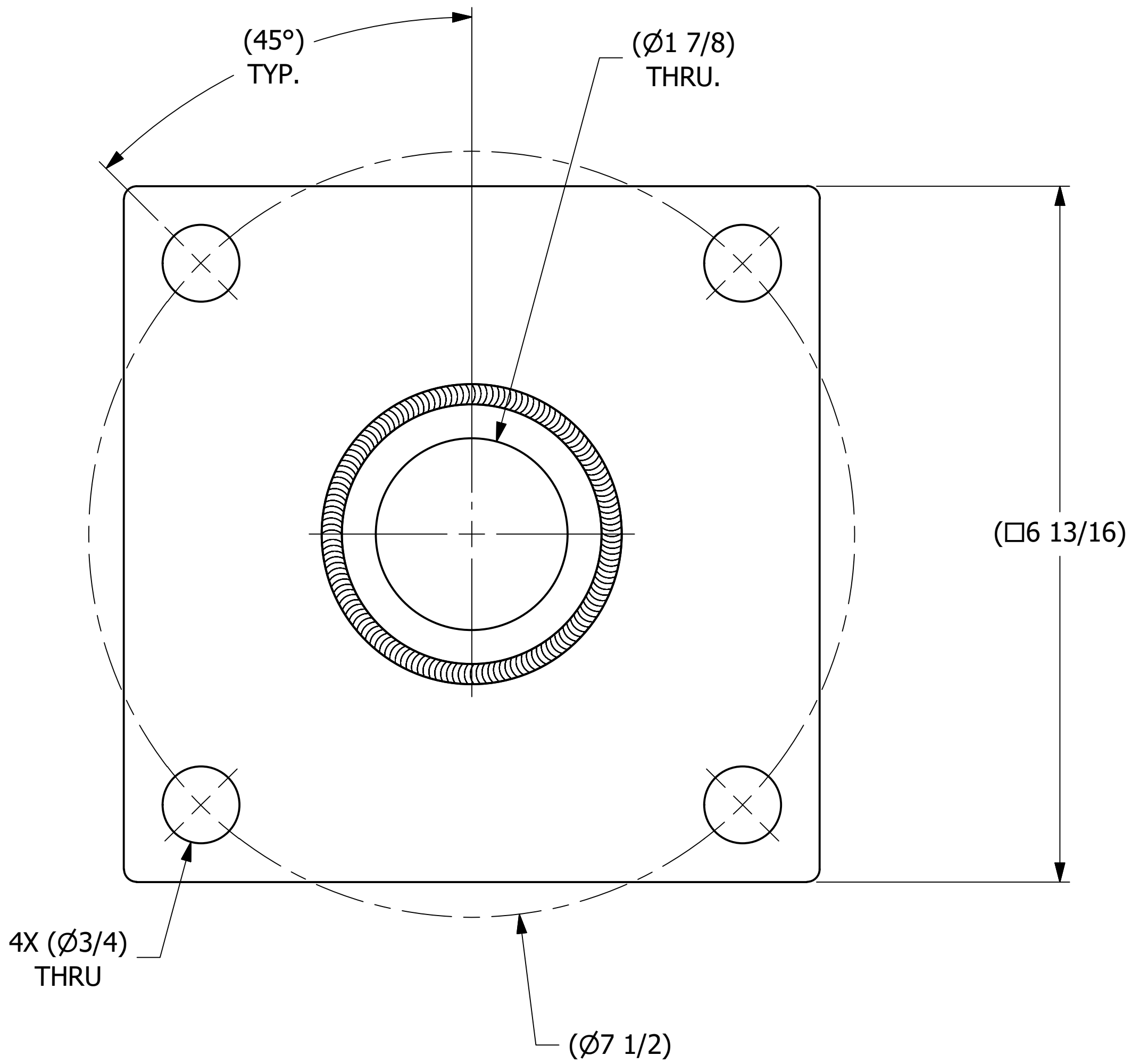


SALES DRAWING SALES DRAWING

SALES DRAWING SALES DRAWING



REV	BY	DATE	DESCRIPTION
E	TAK	3-5-19	Q-2.14 WAS QAP5A-1; Q-2.15.7 WAS QAP4C1; UPDATED WELD NOTE
D	RJP	10-1-15	ADDED BOM, REMOVED FLANGE STEP
C	REH	10-20-11	UPDATED HEAT/LOT NOTE
B	BRG	3-13-09	ADDED HEAT/LOT NUMBER
A	ACC	5-19-04	ADDED PART INTO THE SYSTEM

<small>UNLESS OTHERWISE SPECIFIED DIMENSIONAL TOLERANCES FRACTIONAL: \pm1/16 X.XX: \pm.03 X.XXX: \pm.015 ANGLE: \pm1° DEBURR ALL SHARP EDGES. ALL MACHINED SURFACES TO HAVE A 125 RMS FINISH UNLESS NOTED OTHERWISE.</small>	DRAWN BY:	ACC
	CHECKED BY:	
	PROTOTYPE BY:	ACC
	PROTOTYPE DATE:	2/17/2004
	APPROVED FOR PRODUCTION BY:	ACC
THIRD ANGLE PROJECTION	PRODUCTION DATE:	2/17/2004

SALCO PRODUCTS, INC.		
PART NAME: TOP FITTING ASSEMBLY 2" FLANGED		
MATERIAL: 316L SS		
PROJECT #:	SHEET #:	SCALE:
031103	1 OF 1	1:1
DRAWING #:	PART #:	
C18884	TE2S75QF	

THIS PRINT, PROPERTY OF SALCO PRODUCTS INC., CONTAINS PROPRIETARY INFORMATION AND MUST NOT BE COPIED, REPRODUCED, OR USED DETRIMENTALLY TO OUR INTEREST.